

## CATHY'S ATTARS

505 State Road 150, Unit 741  
ARRAYO SECO, NM, 87514  
USA

### Sample information\*:

Nature ESSENTIAL OIL  
Name INDIAN THUYA  
Botanical name PLATYCLADUS ORIENTALIS  
Origin -  
Plant part -  
Reference ABP/PO/09/23

**Original packaging:** Transparent flask of 2 ml

**Pyrenessences reference:** LD85

**Requested analysis:** CLASSIC GC ANALYSIS

**Date of receipt:** 02/01/2024

**Date of analysis:** 03/01/2024

**Sample storage:** 1 year - room temperature

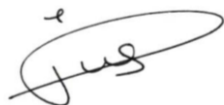
*\* provided by the client*

### - Comments -

### Report validated by:

Line Pauset

- Laboratory manager -



### Report written by:

Anne-Sophie Mora

- Analyst technician -



## ANALYSIS CONDITIONS

**Methodology:** according to ISO 11024

**Sample preparation:** 10% dilution in hexane

**Equipment:** - GC/MS Agilent 7890/5975

- GC/FID Agilent 6890

**Column:** VF-Wax (polar)

**Acquisition method:** 2S\_N

**Peaks identification:** - internal MS library "ESSENCE.L"

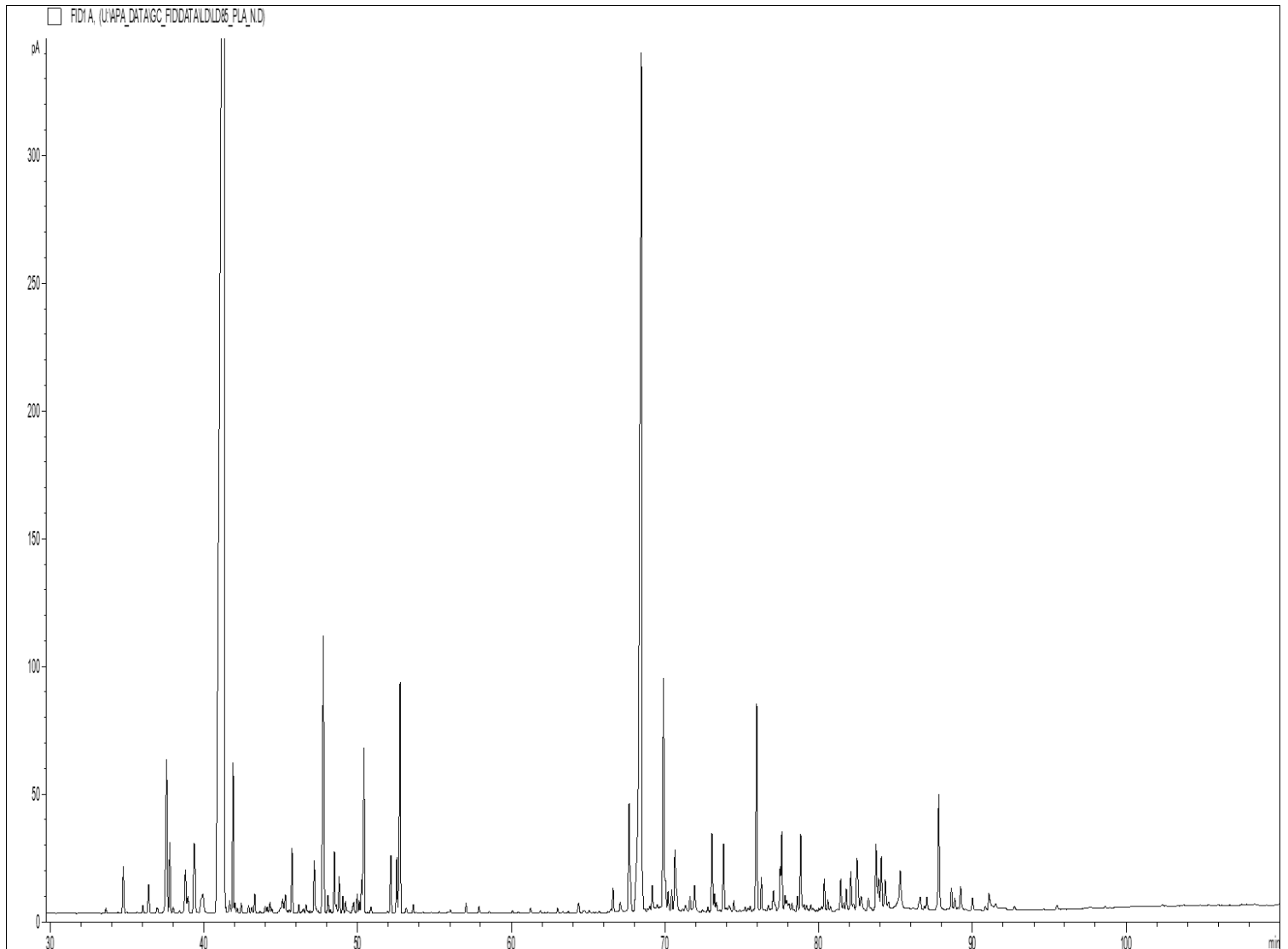
- commercial MS library "NIST.L"

- retention time (internal database)

**Integration threshold:** 0.01%

**Investigation threshold:** 0.02%

## CHROMATOGRAPHIC PROFILE



## RESULTS TABLE

- INDIAN THUYA EO - REF. ABP/PO/09/23 -

Peaks	RT (min)	Compound name	%	Standard (%)	Allergens (%)
1	33.61	CEDRENE ISOMER	0.05		
2	34.75	CEDRENE ISOMER	0.45		
3	35.65	SESQUITERPENE	0.02		
4	36.03	SESQUITERPENE Mw=202	0.07		
5	36.40	HIMACHALENE ISOMER	0.27		
6	36.96	alpha-cis-BERGAMOTENE	0.08		
7	37.57	alpha-CEDRENE	1.77		
8	37.78	beta-FUNEBRENE	0.63		
9	37.99	SESQUITERPENE	0.06		
10	38.41	SESQUITERPENE	0.03		
11	38.80	SESQUITERPENE	0.53		
12	38.95	SESQUITERPENE	0.19		
13	39.37	beta-CEDRENE	0.86		
14	39.92	TERPENIC COMPOUND	0.45		
15	41.33	<b>THUYOPSENE</b>	<b>42.12</b>		
16	41.41	SESQUITERPENE	0.05		
17	41.67	PREZIZA-7-ENE	0.14		
18	41.90	AROMATIC COMPOUND Mw=202	1.19		
19	42.02	GURJUNENE ISOMER	0.08		
20	42.16	alpha-HIMACHALENE	0.05		
21	42.43	SESQUITERPENE	0.09		
22	42.91	SESQUITERPENE	0.08		
23	43.11	SESQUITERPENE	0.07		
24	43.30	GURJUNENE ISOMER	0.17		
25	43.65	AROMATIC COMPOUND	0.03		
26	43.98	CURCUMENE ISOMER	0.07		
27	44.12	SESQUITERPENE	0.06		
28	44.30	CURCUMENE ISOMER	0.10		
29	44.43	SESQUITERPENE	0.04		
30	44.96	SESQUITERPENE	0.05		
31	45.11	gamma-CURCUMENE	0.17		
32	45.29	alpha-TERPINEOL	0.19		0.19
33	45.42	SESQUITERPENE	0.03		
34	45.55	TERPENIC COMPOUND	0.03		
35	45.73	beta-CHAMIGRENE	0.53		
36	46.17	beta-HIMACHALENE	0.07		
37	46.47	SESQUITERPENE	0.06		
38	46.64	SESQUITERPENE	0.08		
39	46.75	PELLANDRAL	0.02		
40	46.89	AROMATIC COMPOUND	0.02		
41	47.18	AROMATIC COMPOUND	0.50		
42	47.42	SESQUITERPENE	0.02		
43	47.77	<b>HIMACHALENE ISOMER</b>	<b>2.76</b>		

**RESULTS TABLE**

- INDIAN THUYA EO - REF. ABP/PO/09/23 -

Peaks	RT (min)	Compound name	%	Standard (%)	Allergens (%)
44	48.07	beta-CURCUMENE	0.14		
45	48.22	SESQUITERPENE	0.03		
46	48.49	SESQUITERPENE Mw=202	0.51		
47	48.60	SESQUITERPENIC COMPOUND	0.07		
48	48.80	ALIPHATIC ESTER	0.31		
49	49.03	E,E-alpha-FARNESENE	0.12		
50	49.21	AROMATIC COMPOUND	0.10		
51	49.67	SESQUITERPENE	0.04		
52	49.74	beta-SESQUIPELLANDRENE	0.09		
53	49.97	alpha-CURCUMENE	0.15		
54	50.11	AROMATIC COMPOUND	0.09		
55	50.25	trans-alpha-BISABOLENE	0.27		
56	50.41	HIMACHALENE ISOMER	1.42		
57	50.86	MYRTENOL	0.06		
58	52.16	TERPENIC COMPOUND	0.48		
59	52.55	ALIPHATIC ESTER	0.46		
60	52.76	CUPARENE	2.14		
61	53.16	trans-CALAMENENE	0.06		
62	53.61	AROMATIC COMPOUND	0.08		
63	55.30	SESQUITERPENE Mw=202	0.02		
64	56.03	COMPOUND Mw=188	0.04		
65	57.05	AROMATIC COMPOUND	0.09		
66	57.90	COMPOUND Mw=202	0.07		
67	58.56	AROMATIC COMPOUND	0.02		
68	60.07	COMPOUND Mw=220	0.02		
69	61.25	COMPOUND Mw=220	0.05		
70	61.90	AROMATIC COMPOUND	0.03		
71	63.01	COMPOUND Mw=220	0.05		
72	63.34	AROMATIC COMPOUND	0.02		
73	63.70	AROMATIC COMPOUND	0.02		
74	64.37	SESQUITERPENIC OXIDE	0.12		
75	64.77	WIDDROL ISOMER	0.03		
76	65.05	COMPOUND Mw=220	0.03		
77	65.72	SESQUITERPENIC OXIDE	0.02		
78	66.47	SESQUITERPENOL	0.04		
79	66.61	COMPOUND Mw=220	0.27		
80	67.08	CEDROL ISOMER	0.17		
81	67.66	CEDROL ISOMER	1.31		
82	68.35	SESQUITERPENIC COMPOUND Mw=222	1.21		
83	68.46	<b>CEDROL</b>	<b>12.75</b>		
84	68.87	SESQUITERPENOL	0.05		
85	68.99	COMPOUND Mw=178	0.20		
86	69.17	SESQUITERPENOL	0.21		

**RESULTS TABLE**

- INDIAN THUYA EO - REF. ABP/PO/09/23 -

Peaks	RT (min)	Compound name	%	Standard (%)	Allergens (%)
87	69.48	EUDESMOL ISOMER	0.13		
88	69.69	SESQUITERPENOL	0.08		
89	69.90	WIDDROL	2.43		
90	70.02	SESQUITERPENOL	0.25		
91	70.20	CEDROL ISOMER	0.21		
92	70.44	SESQUITERPENOL	0.22		
93	70.64	CEDROL ISOMER	0.93		
94		SESQUITERPENONE			
95	71.33	COMPOUND Mw=220	0.11		
96	71.62	SESQUITERPENOL	0.17		
97	71.92	SESQUITERPENONE	0.38		
98	72.45	THYMOL	0.04		
99	72.78	HIMACHALOL	0.05		
100	73.06	alpha-BISABOLOL	0.70		
101	73.21	SESQUITERPENOL	0.17		
102	73.34	alpha-EUDESMOL	0.10		
103	73.81	AROMATIC COMPOUND Mw=220	0.63		
104	74.17	AROMATIC COMPOUND	0.12		
105	74.47	SESQUITERPENOL	0.13		
106	75.21	SESQUITERPENONE	0.06		
107	75.40	AROMATIC COMPOUND	0.04		
108	75.55	AROMATIC COMPOUND	0.06		
109	75.96	AROMATIC COMPOUND	2.04		
110	76.27	AROMATIC COMPOUND	0.33		
111	76.71	CURCUMENOL ISOMER	0.08		
112	77.04	COMPOUND Mw=238	0.27		
113	77.17	AROMATIC COMPOUND	0.06		
114	77.49	BICYCLOVETIVENOL	0.44		
115	77.60	AROMATIC COMPOUND	0.72		
116	77.81	SESQUITERPENOL Mw=222	0.18		
117	77.92	AROMATIC COMPOUND	0.13		
118	78.07	SESQUITERPENIC OXIDE	0.09		
119	78.25	SESQUITERPENONE	0.10		
120	78.61	AROMATIC COMPOUND	0.15		
121	78.82	alpha-CEDRENOL	0.77		
122	79.04	COMPOUND Mw=218	0.09		
123	79.20	COMPOUND Mw=216	0.08		
124	79.48	SANTALOL ISOMER	0.07		
125	79.99	SESQUITERPENIC OXIDE	0.03		
126	80.20	COMPOUND Mw=220	0.07		
127	80.36	AROMATIC COMPOUND Mw=222	0.32		
128	80.59	SESQUITERPENIC OXIDE	0.12		
129	80.76	COMPOUND Mw=220	0.05		

## RESULTS TABLE

- INDIAN THUYA EO - REF. ABP/PO/09/23 -

Peaks	RT (min)	Compound name	%	Standard (%)	Allergens (%)
130	81.22	COMPOUND Mw=216	0.03		
131	81.43	CEDRENOL ISOMER	0.34		
132	81.61	SESQUITERPENIC OXIDE	0.09		
133	81.79	COMPOUND Mw=220	0.23		
134	82.09	CEDRENOL ISOMER	0.41		
135	82.26	COMPOUND Mw=216	0.09		
136	82.49	SESQUITERPENIC OXIDE	0.73		
137	82.76	MYRTENOIC ACID	0.24		
138	83.23	ACID COMPOUND	0.21		
139	83.73	COMPOUND Mw=220	0.67		
140	83.89	AROMATIC COMPOUND	0.40		
141	84.07	SESQUITERPENOL	0.55		
142	84.32	TERPENIC COMPOUND	0.41		
143	84.53	AROMATIC COMPOUND	0.12		
144	85.30	ACID COMPOUND	0.89		
145	86.60	SESQUITERPENIC OXIDE	0.24		
146	86.87	AROMATIC COMPOUND	0.05		
147	87.04	CEDRENOL ISOMER	0.19		
148	87.81	AROMATIC COMPOUND Mw=218	1.22		
149	88.63	COMPOUND Mw=218	0.23		
150	88.85	SESQUITERPENIC OXIDE	0.14		
151	89.23	AROMATIC COMPOUND	0.28		
152	90.00	SESQUITERPENOL	0.14		
153	90.84	TERPENIC COMPOUND	0.04		
154	91.06	ACID COMPOUND	0.44		
155	91.51	AROMATIC COMPOUND	0.04		
156	92.73	AROMATIC COMPOUND	0.03		
157	95.50	AROMATIC COMPOUND Mw=218	0.05		
158	97.61	SESQUITERPENIC OXIDE	0.02		
159	98.61	AROMATIC COMPOUND Mw=218	0.02		
		<b>TOTAL</b>	<b>99.41</b>		<b>0.19</b>

### Abbreviations:

GC	Gas chromatography
MS	Mass spectrometry
FID	Flame ionization detector
EO	Essential oil
RT	Retention time
Nd	Not detected
Tr.	Traces

- The results refer only to the object submitted for analysis, only to the sample as it was received.

- Reproduction of this report is only authorized in its integral form unless authorized by the laboratory.